



# FLYMAG

## MAGNETIC STRIP FOR INSECT SCREENS

### FlyMag Magnetic Mesh Screen Instructions

#### What you'll need:

A cleaning cloth, sharp craft knife, alcohol based cleaner, a flat cutting surface larger than the window that is safe to cut on.

The Included A&B magnetic strips & corners:

#### Magnet Part A

no groove

(Mounts to the window/frame)

#### Magnet Part B

groove

(Mounts to the mesh screen)

#### Preparation:

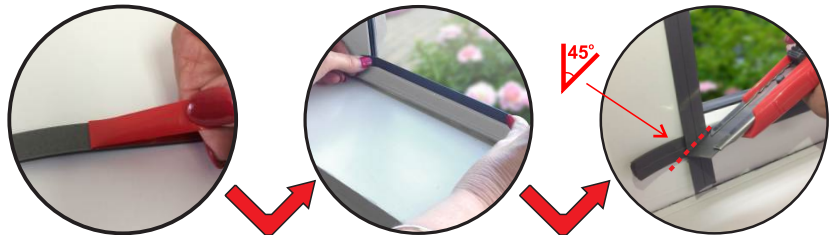
Thoroughly clean your window frames. We recommend an alcohol based cleaner to ensure a good bonding of the adhesive.



#### Step 1:

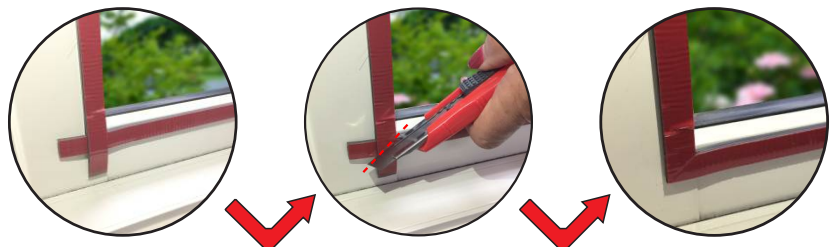
Measure your window frames and cut **Magnet Part A** strips into lengths to suit - trim them at a 45° angle in the corners for a snug and tidy fit. Once you have your lengths, you can remove the **red plastic backing** from the strips and adhere them to the window frames.

*Pro Tip! You don't have to remove the whole red backing at once... Start with a small section at one end, and remove the backing as you apply the strip.*



#### Step 2:

Starting from one end, lay the **Magnet Part B** strips over the top of your mounted Part A strips to copy the measurements. Ensure the red tape faces you and that the strips have gone down evenly over the Part A strips. Then trim again at 45° angles in the corners.

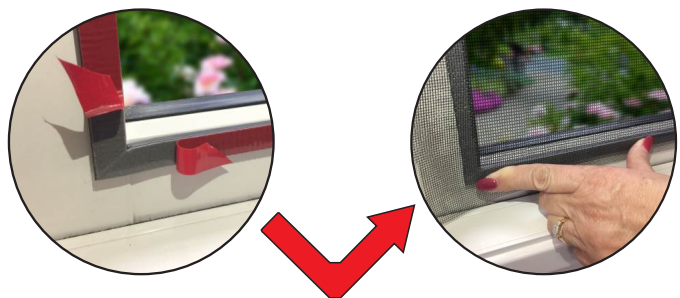


#### Step 3:

Remove the red backing tape from the entire frame to expose the adhesive.

Lay the **Flymag™ Mesh** over the entire frame ensuring you keep the mesh as square and tight as possible (or it will bug you later!)

Press firmly around the magnetic frame to adhere the mesh to the magnet strip frame.



#### Step 4:

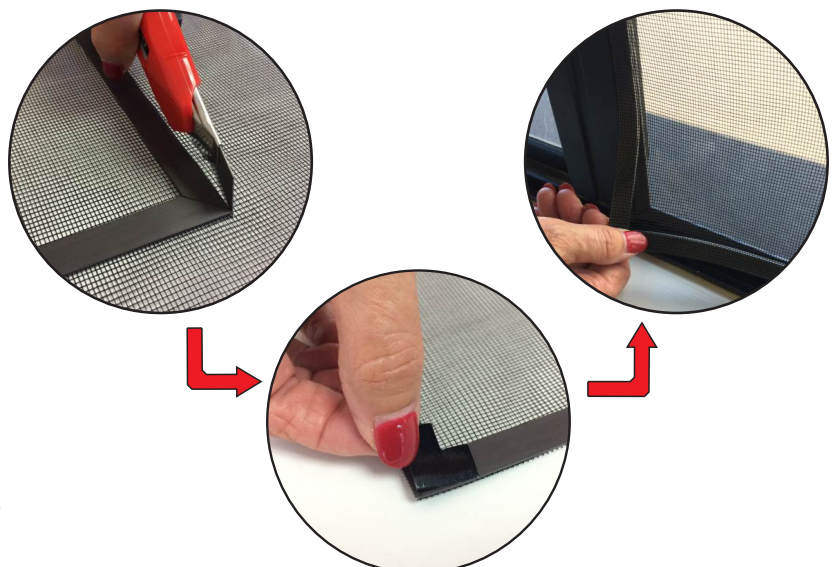
Gently remove the entire screen from the window frame, (**Flymag™ Mesh and Magnet Part B**) and lay down on to a flat cutting surface with the magnet strip side facing up. Trim the excess mesh from the frame using a craft knife or scissors.

#### Step 5:

Once trimmed, apply the **self adhesive corner stickers** to the magnet strip joins for extra strength.

#### Step 6:

Press along the edges again to ensure the mesh has bonded. **Apply weight to mesh screen border for 24 hours to ensure a firm bonding between the mesh and the strip.**



**Your new flyscreen is now ready for install!!**



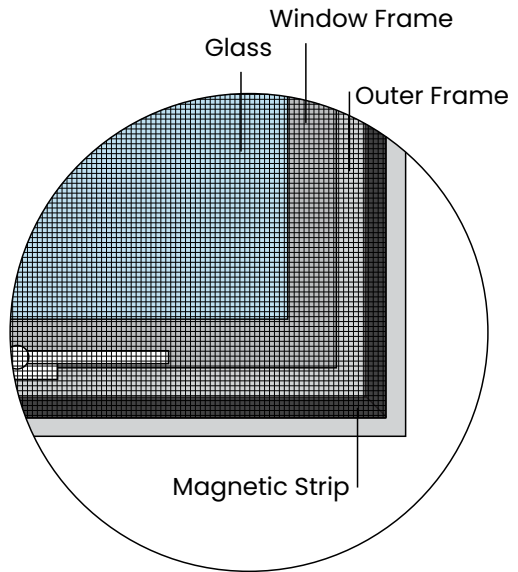
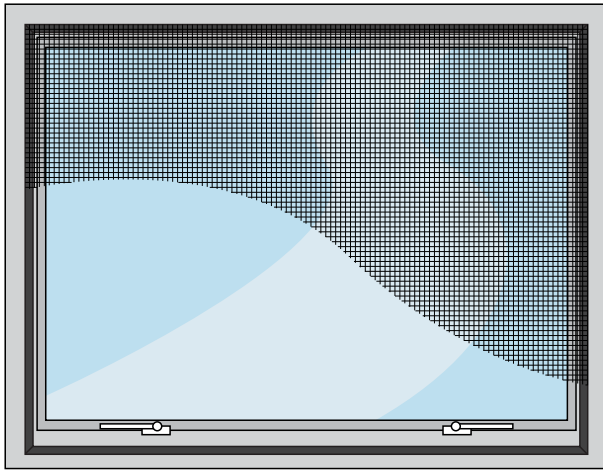
# FLY**MAG**



## MAGNETIC STRIP FOR INSECT SCREENS

### FlyMag MagneticMesh Screen Instructions

#### FlyMesh

Mount outside the window frame



-  A: 1st Strip Layer
-  B: 2nd Strip Layer (Mesh Layer)

